

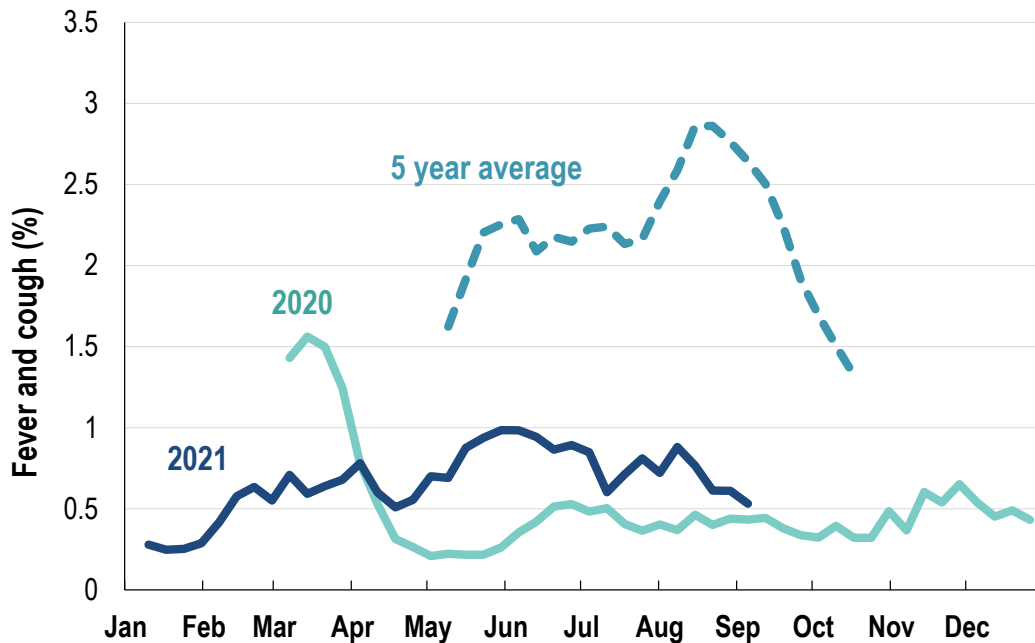


**This week influenza-like illness activity is low**  
**62,357 participants this week**

**Influenza-like illness activity\*:**

\*Influenza-like illness activity is defined as fever & cough for this report

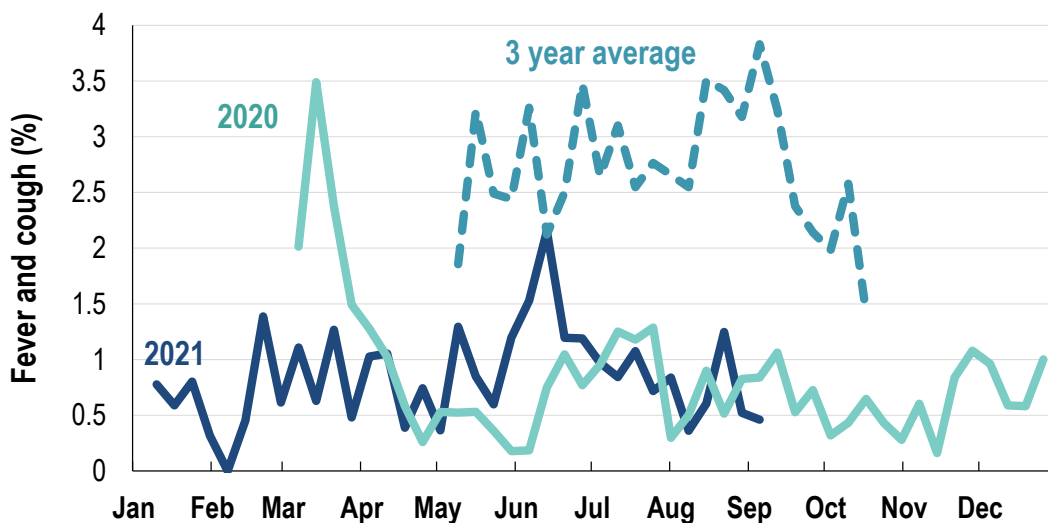
**0.5% this week: flu-like illness activity is low**



\*5 year average is calculated using 2015, 2016, 2017, 2018 and 2019 data  
^ Data are age standardised in this chart

**Influenza-like illness activity among Aboriginal and Torres Strait Islander participants**

**0.5% this week: flu-like illness activity is low**



\*Average Number of Aboriginal and Torres Strait Islander Participants = 743  
^3 year average is calculated using 2017, 2018 and 2019 data

**Influenza-like illness severity:**

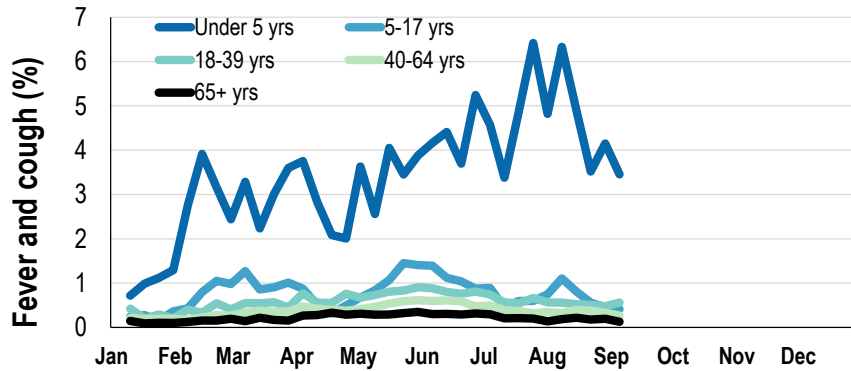
*55.9% of participants with fever and cough sought medical advice this week*

Influenza-like illness Severity	Week ending 05 September 2021 number (%)	Week ending 29 August 2021 number (%)
<b>Number of participants</b>	62357 (100%)	63040 (100%)
Fever & cough	202 (0.3%)	241 (0.4%)
Fever, cough & time-off normal duties	132 (0.2%)	169 (0.3%)
Fever, cough & 3 or more days off work/normal duties	132 (0.2%)	169 (0.3%)
<b>Number of participants with fever and cough</b>	202 (100%)	241 (100%)
*Sought medical advice for fever and cough	113 (55.9%)	130 (53.9%)
Admitted to hospital	3 (1.5%)	2 (0.8%)
Tested for influenza	18 (8.9%)	29 (12%)
Tested, result positive for influenza	1 (0.5%)	3 (1.2%)
Tested for coronavirus (COVID-19)	94 (46.5%)	117 (48.5%)
Tested, result positive for coronavirus (COVID-19)	5 (2.5%)	1 (0.4%)

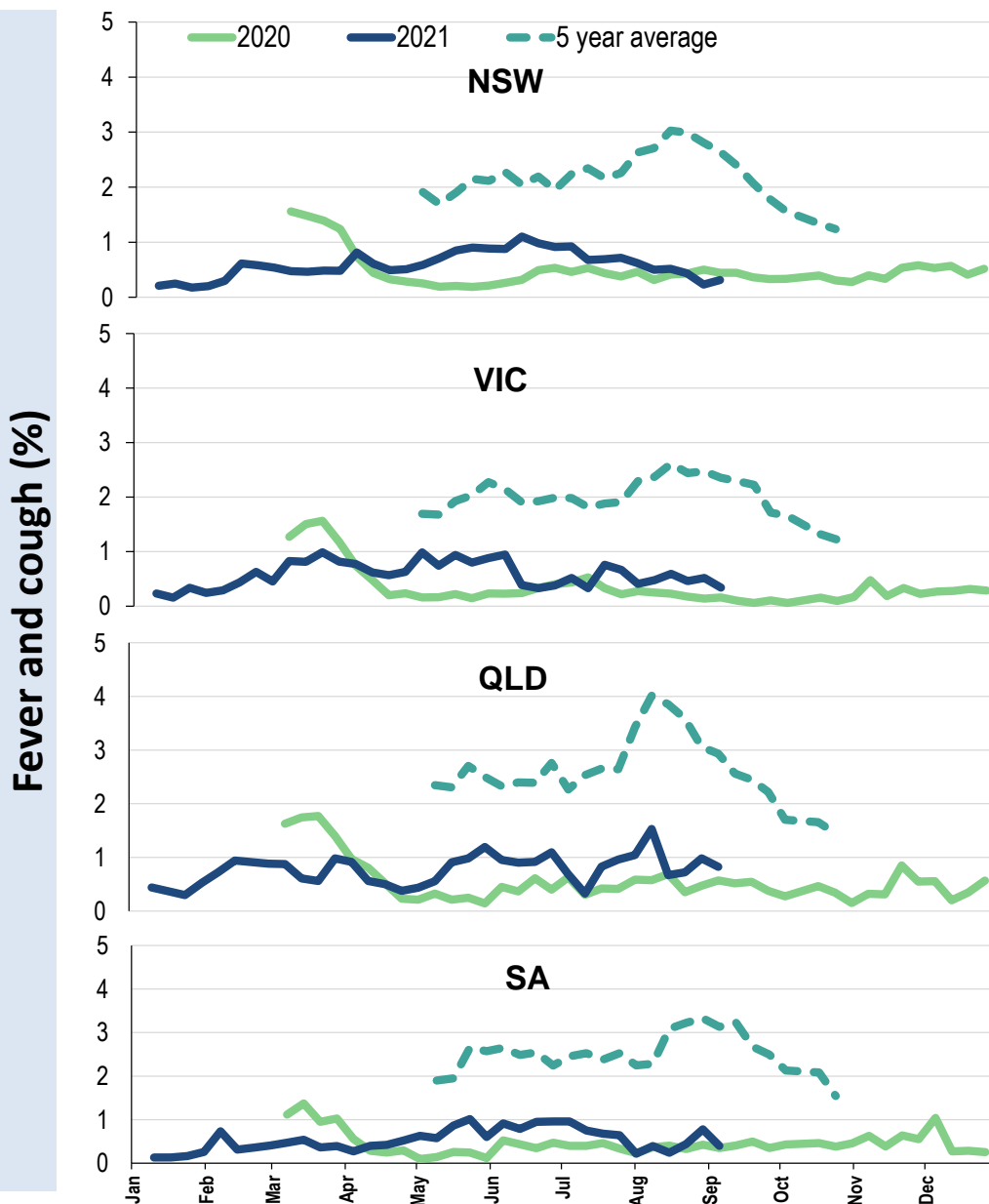
\*Includes those who sought medical advice from a general practitioner, COVID-19 clinic, emergency department, or were admitted to hospital for fever & cough



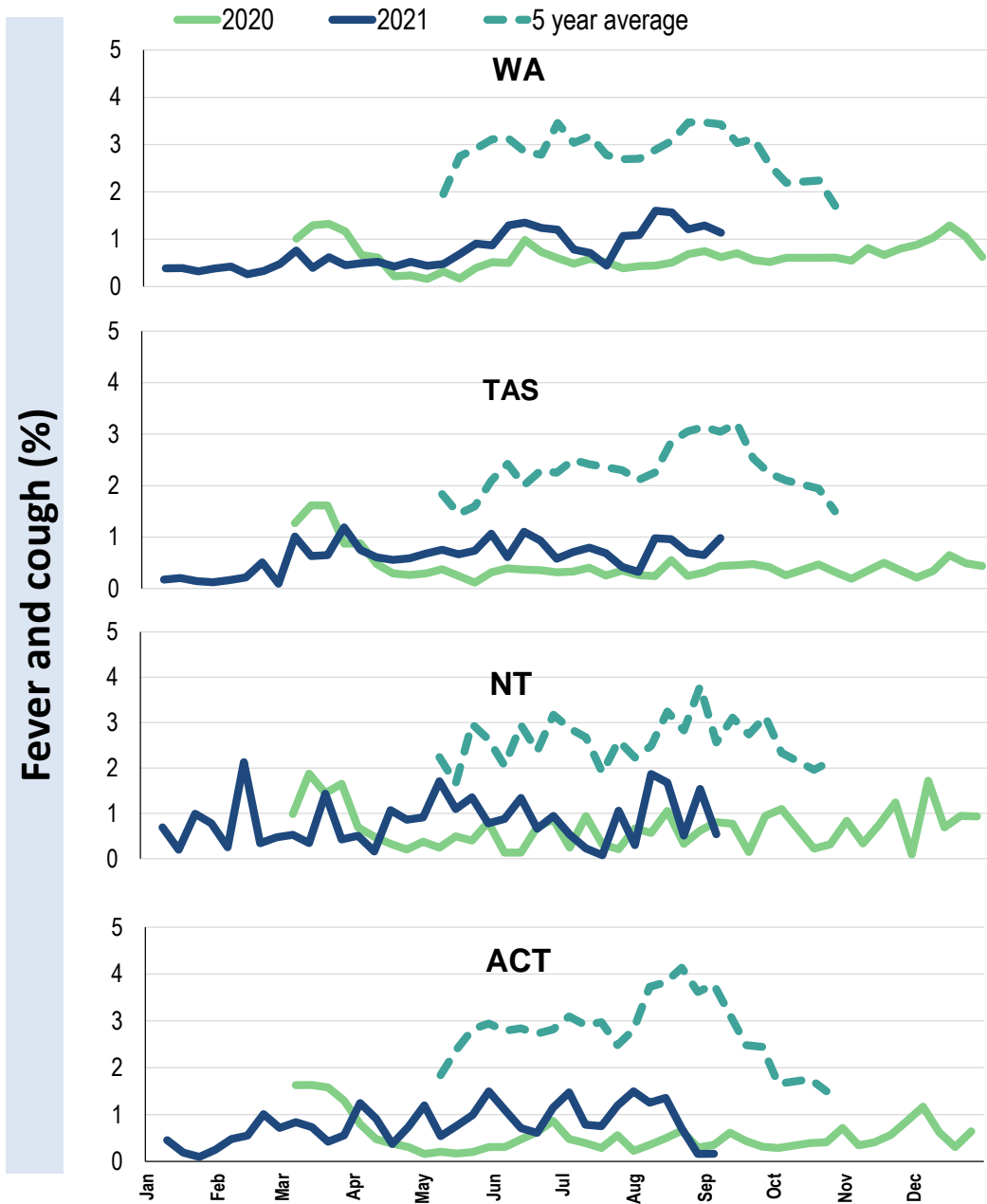
#### Influenza-like illness activity by age group (Australia):



#### Influenza-like illness activity by state/territory (age standardised):



**Influenza-like illness activity by state/territory (age standardised):**



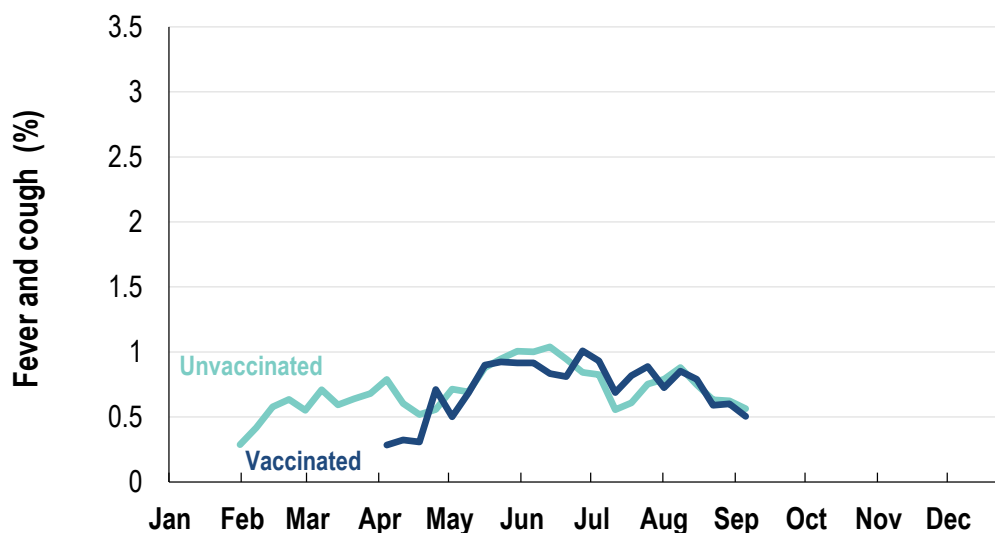
**Participation:**

**62,357 participants (63,040 last week)**

State	Participants	% Rate/100,000 population
NSW	22051	35.4% <b>279.3</b>
VIC	12638	20.3% <b>198.7</b>
QLD	7636	12.2% <b>154.3</b>
SA	5359	8.6% <b>310.3</b>
WA	5974	9.6% <b>230.9</b>
TAS	3994	6.4% <b>765.1</b>
NT	1054	1.7% <b>428.3</b>
ACT	3651	5.9% <b>884.9</b>
AUS	62357	100.0% <b>252.4</b>

**Vaccination rates:**

Vaccinated participants:	COVID-19 vaccine		Influenza (%)
	At least 1 dose (%)	2 doses (%)	
<5 years			57.0
5-17 years	8.2	1.9	38.2
18-64 years	89.8	73.8	72.3
65+ years	96.9	85.6	90.5
Working with patients	96.4	90.3	85.5
Aboriginal and/or Torres Strait Islander	70.0	54.5	65.8
<b>Vaccinated overall (%)</b>	<b>83.8</b>	<b>70.3</b>	<b>75.0</b>



\* Data are age standardised in this chart  
 ^2021 Influenza vaccination data not available until 04/04/21 due to low counts